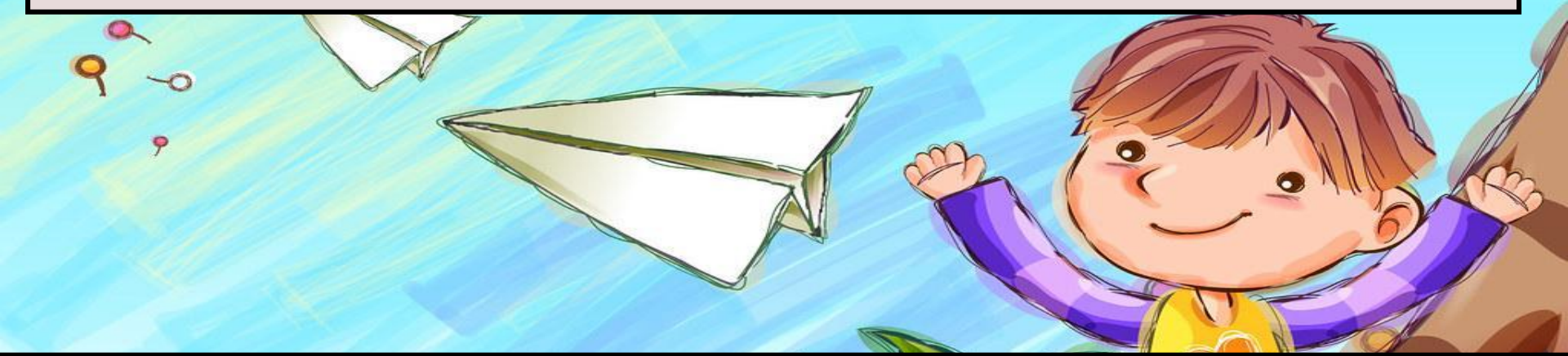


# Welcome to AAQ Health and Social Care



## Learning Outcomes:

1. Understand what Health and Social Care is and the careers it can lead to.
1. Explore what "safe, person-centred care" looks like.
1. Begin to think like care professionals – identifying risks and promoting wellbeing.

# What will you study?



## All students will study:

Unit 1 - Human Lifespan and Development (Exam)

Unit 2 - Human Biology and Health (Exam)

Unit 3 - Principles of Health and Social Care Practice (Internal)

## Students will study one of the following units, chosen by your teacher:

Unit 4 - Health, Policy and Wellbeing

Unit 5 - Promoting Health Education

Unit 6 - Safe Environments in Health and Social Care

Unit 7 - Health Science

A colorful illustration of a young child with brown hair, wearing a purple long-sleeved shirt and blue pants, sitting on a thick brown tree branch. The child is smiling and has their arms raised. The background is a bright blue sky with green and yellow brushstrokes. Two white paper airplanes are flying in the sky. There are several colorful flowers (pink, orange, yellow) scattered around the scene. A central text box is overlaid on the image.

# What is Health and Social Care?

5:00

# Let's Help Amir



Amir is 75 years old and has just come home from hospital after having a fall. He lives alone in a small flat. He needs some help with daily tasks while he recovers. He has arthritis and is beginning to forget things, such as whether he has taken his medication.

What care and support might Amir need?

What professionals or services could be involved in his care?

How could we make sure Amir feels respected and safe?

# Let's Help Amir

Amir is 75 years old and has just come home from hospital after having a fall. He lives alone in a small flat. He needs some help with daily tasks while he recovers. He has arthritis and is beginning to forget things, such as whether he has taken his medication.

You have walked into Amir's home and seen:

- An electric heater next to the curtains.
- A spilled drink on the floor near the bed.
- A wheelchair blocking the fire exit.
- A used glove left on the bedside table.
- Medicine left open on the windowsill.

What would you do? Why are these potential hazards?

# What makes a Good Care Worker?

In pairs, list as many skills you think a good care worker should have.

- Empathy
- Patience
- Respect
- Communication
- Courage
- Kindness
- Problem-solving
- Listening
- Honesty
- Confidence

Create a Diamond Nine of which you think are the most important for a good care worker to have, and which you think are the least important.

Be prepared to share and discuss your answers.

5:00

# Specialist Careers in Health Care and Social Care

Match the job title to the description below

- Empathy
- Patience
- Respect
- Communication
- Courage
- Kindness
- Problem-solving
- Listening
- Honesty
- Confidence

Select one of the skills from the list on the left.

How do you think each of the specialists would demonstrate this skills? Why is it important?

3:00



**Thank you for coming today!**

**Any questions?**