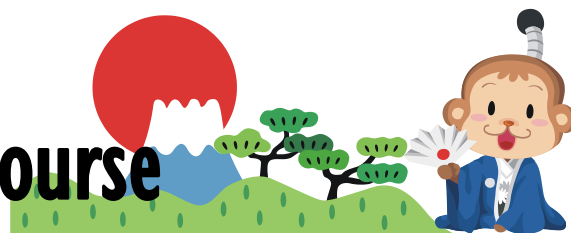


Summer Task for A-Level Japanese Course



Task 1

What?

Your task is to learn to read and write the 200 GCSE Kanji.

Why?

You will need to learn another 400 kanji for A Level Japanese. The 200 GCSE kanji underpin the A Level kanji, so a secure knowledge of your GCSE kanji is absolutely vital in order for you to make progress.

How?

Use your GCSE Higher Kanji booklet to practise all the GCSE kanji. If you do not have a copy of the booklet, you will need to get one from Ms Kidoguchi/Ms Langsam

Task 2

What?

Your task is to complete 2 sections of the online Marugoto self-study course comprising of 9 different topics. The course is free, you just need to register.

Why?

The topics will secure your knowledge of GCSE Japanese and get you ready for A Level

How?

Use these links to take you to the right Marugoto course:

1. Marugoto A2-1 (Katsudoo & Rikai) Self-Study Course (Topics 1-5)

https://minato-jf.jp/CourseDetail/Index/KC25_MGRS_A201_EN01

2. Marugoto A2-2 (Katsudoo & Rikai) Self-Study Course (Topics 6-9)

https://minato-jf.jp/CourseDetail/Index/KC25_MGRS_A202_EN01

We suggest you do 2 topics a week

